



# Avive™ Charge Stand Installation Guide

## Items Needed for Installation

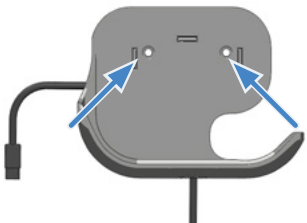
- Avive Charge Stand (provided)
- USB Power Adapter (provided)
- 2 x Wall anchor and screw (provided)
- Pen or pencil
- Drill with 3/16" drill bit
- Phillips head screwdriver #2 size

## 1 Identify Location of Installation

Identify an interior wall location near an outlet to install the Avive Charge Stand at a height of approximately 48" from the ground. The Avive Charge Stand is intended for interior use only. For exterior applications, it is recommended to use an enclosed AED cabinet.

## 2 Mark Hole Locations on Wall

Place the Charge Stand against the wall at the desired location. Place a leveling tool over the Charge Stand to make sure it is level. Use a pen or pencil to mark the two hole locations shown below on the wall. Remove Charge Stand from wall.



## 3 Drill Holes

Drill two 3/16" holes through the wall where you marked the hole locations.



## 4 Install Anchors on Wall

Insert the two anchors in the holes. If necessary, use a hammer or mallet to ensure that the flange around the anchors is fully flush with the wall.



## 5 Adjust Charging Cable

Adjust the Charge Stand Cable to the desired length by wrapping it around the back of the Charge Stand.



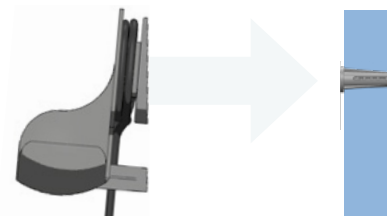
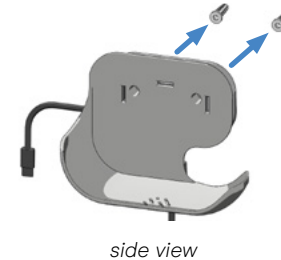
## 6 Place Cable in Holder

Place the cable in the slot on the back of the Charge Stand to hold it in place, as shown.



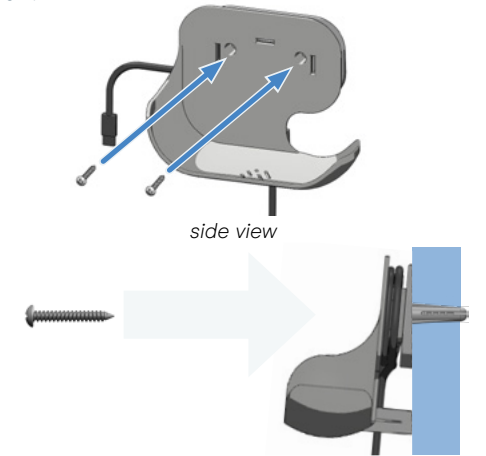
## 7 Place Charge Stand

Align the holes in the Charge Stand with the anchor holes and place the Charge Stand against the wall.



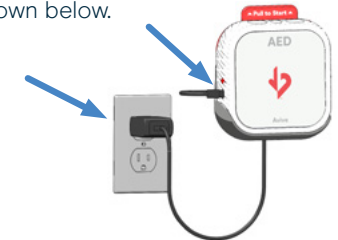
## 8 Secure Charge Stand

Place the screws through the holes in the front of the Charge Stand and screw into the wall anchors. Tighten the screws until the Charge Stand is secure to the wall and the back of the Charge Stand is flush against the wall, as shown below.



## 9 Plug in AED

Plug the USB cable into the USB Power Adapter and plug the adapter into an outlet. The Avive AED can now be placed on the Avive Charge Stand and charged using the USB-C plug as shown below.





avive.life  
(800) 489-4428

Avive Solutions, Inc.  
185 Valley Drive  
Brisbane, CA 94005 USA

©2023 Avive Solutions, Inc. All rights reserved. The Heart and Arrow Logo, Heart and Arrow Logo AED, Avive, Avive AED, Avive Connect AED, REALConnect, REALConnect Platform, QuickRescue, Intelligent Response, Rapid Incident Reporting, LIFESaver, Avive 4 Minute City, Incident Data Transfer, AllRescue Technology, EverCharge Battery, are trademarks of Avive Solutions, Inc. Other marks are the property of their respective owners.